

essential
ceremonies





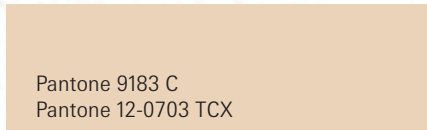
natural and authentic
so beautiful!

Naturalness and modernity meet authenticity and genuineness. This sensual, highly emotional theme brings scenic beauty and natural simplicity to the home and to festive decorations.

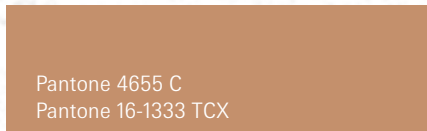
Natürlichkeit und Modernität treffen auf Echtes und Unverfälschtes. Dieses sinnliche, hoch emotionale Thema bringt landschaftliche Schönheit und natürliche Einfachheit in die Wohnung und die festliche Dekoration.



Pantone 620 C
Pantone 16-0543 TCX



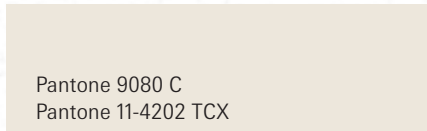
Pantone 9183 C
Pantone 12-0703 TCX



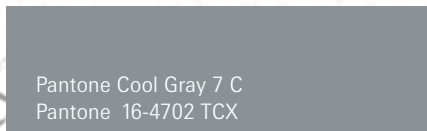
Pantone 4655 C
Pantone 16-1333 TCX



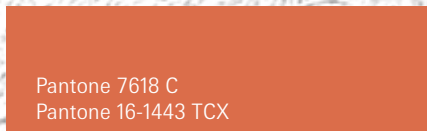
Pantone 446 C
Pantone 19-0405 TCX



Pantone 9080 C
Pantone 11-4202 TCX



Pantone Cool Gray 7 C
Pantone 16-4702 TCX

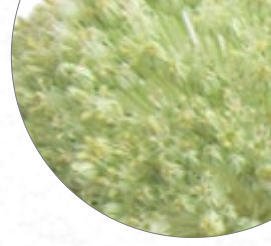


Pantone 7618 C
Pantone 16-1443 TCX

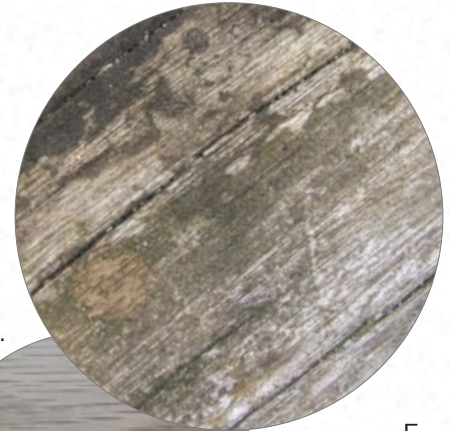


B.

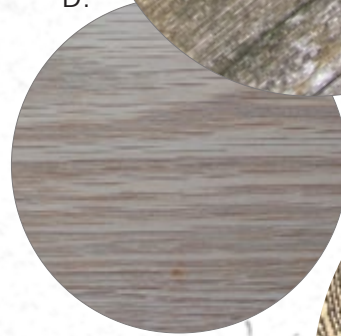
A.



C.



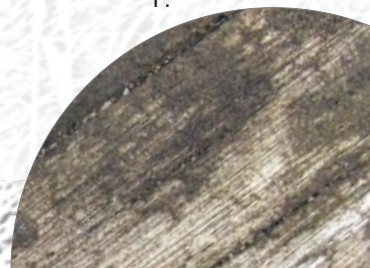
D.



E.

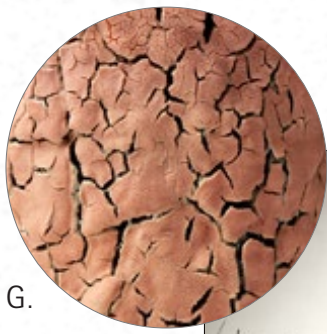


F.



The harmonious, earthy colour chart reflects the close connection to nature. Calm, cool and purist neutral shades sit next to warm, fired tones and matcha green. Matt, rough and untreated finishes underline the original colour character of this natural and restrained look.

Die harmonische, erdige Farbreihe spiegelt die enge Verbindung zur Natur wider. Es stehen ruhige, kühle und puristische Neutrale neben warmen, gebrannten Tönen und einem Matchagrün. Matte, raue und unbehandelte Finishes unterstreichen den ursprünglichen Farbcharakter dieses naturhaften und zurückhaltenden Looks.



G.



H.



K.



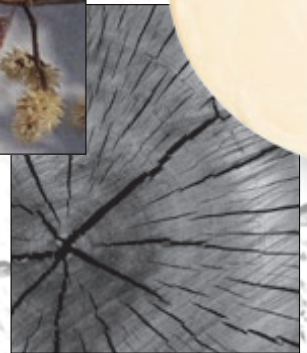
L.



I.

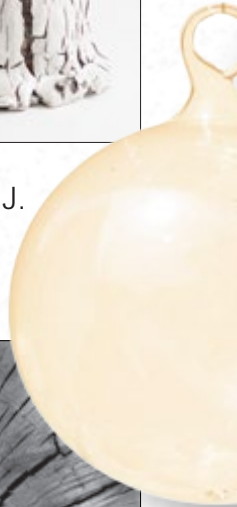


M.



N.

J.



Dry, brittle and broken surfaces, cracked structures and aged elements convey a closeness to nature and simplicity. The emotional, creative and experimental treatment of the materials as well as the rustic aesthetics of the craftsmanship catch the eye. Subtlety and finesse are particularly evident in the unpretentious table decorations for festive occasions – and for everyday moments of pleasure.

Trockene Haptik, spröde, gebrochene Oberflächen, rissige Strukturen und gealterte Aspekte stehen für Naturnähe und Einfachheit. Auffallend sind der emotionale, kreativ-experimentelle Umgang mit den Werkstoffen sowie die handwerklich-rustikale Ästhetik. Feinsinnige Finesse zeigt sich besonders in den ungekünstelten Tischdekorationen für festliche Anlässe – aber auch für die alltäglichen Genussmomente.

CREDITS COLLAGE: Vase: Ground Vase series by Ragna Ragnarsdóttir Ceramic Vessel: Barkskin Vessel by Irina Razumovskaya, Photo: Tanya Dolvers Tealight candle holder: Valkea by iittala Christmasball: Pure Transparent by Christoball MATERIALS, PRODUCTS, PROJECTS: A. Image archive: Detail, Leek Blossom B.+ E. Wall Baskets by The Basket room C.+ F. Image archive: Weathered Wood D. Image archive: Oak G.+ I. Barkskin Vessel by Irina Razumovskaya, Photo: Tanya Dolvers (G: Detail) H. Image archive: Plants Garland J. Pure Transparent by Christoball K. Image archive: Pine cone L. Hirawa Shikoku by Wara Design Laboratory M. Image archive: Shadow effect N. Image archive: Tree trunk